



PlayStation

NTSC U/C

PlayStation

Razor™

FREESTYLE SCOOTER



EVERYONE



CONTENT RATED BY ESRB

SLUS-01322

CRAVE ENTERTAINMENT

WARNING: READ BEFORE USING YOUR PLAYSTATION® GAME CONSOLE.

A very small percentage of individuals may experience epileptic seizures when exposed to certain light patterns or flashing lights. Exposure to certain patterns or backgrounds on a television screen or while playing video games, including games played on the PlayStation game console, may induce an epileptic seizure in these individuals. Certain conditions may induce previously undetected epileptic symptoms even in persons who have no history of prior seizures or epilepsy. If you, or anyone in your family, has an epileptic condition, consult your physician prior to playing. If you experience any of the following symptoms while playing a video game – dizziness, altered vision, eye or muscle twitches, loss of awareness, disorientation, any involuntary movement, or convulsions – IMMEDIATELY discontinue use and consult your physician before resuming play.

WARNING TO OWNERS OF PROJECTION TELEVISIONS:

Do not connect your PlayStation game console to a projection TV without first consulting the user manual for your projection TV, unless it is of the LCD type. Otherwise, it may permanently damage your TV screen.

USE OF UNOFFICIAL PRODUCT:

The use of unofficial products and peripherals may damage your PlayStation game console and invalidate your console warranty.

HANDLING YOUR PLAYSTATION DISC:

- This compact disc is intended for use only with the PlayStation game console.
- Do not bend it, crush it or submerge it in liquids
- Do not leave it in direct sunlight or near a radiator or other source of heat.
- Be sure to take an occasional rest break during extended play.
- Keep this compact disc clean. Always hold the disc by the edges and keep it in its protective case when not in use. Clean the disc with a lint-free, soft, dry cloth, wiping in straight lines from center to outer edge. Never use solvents or abrasive cleaners.



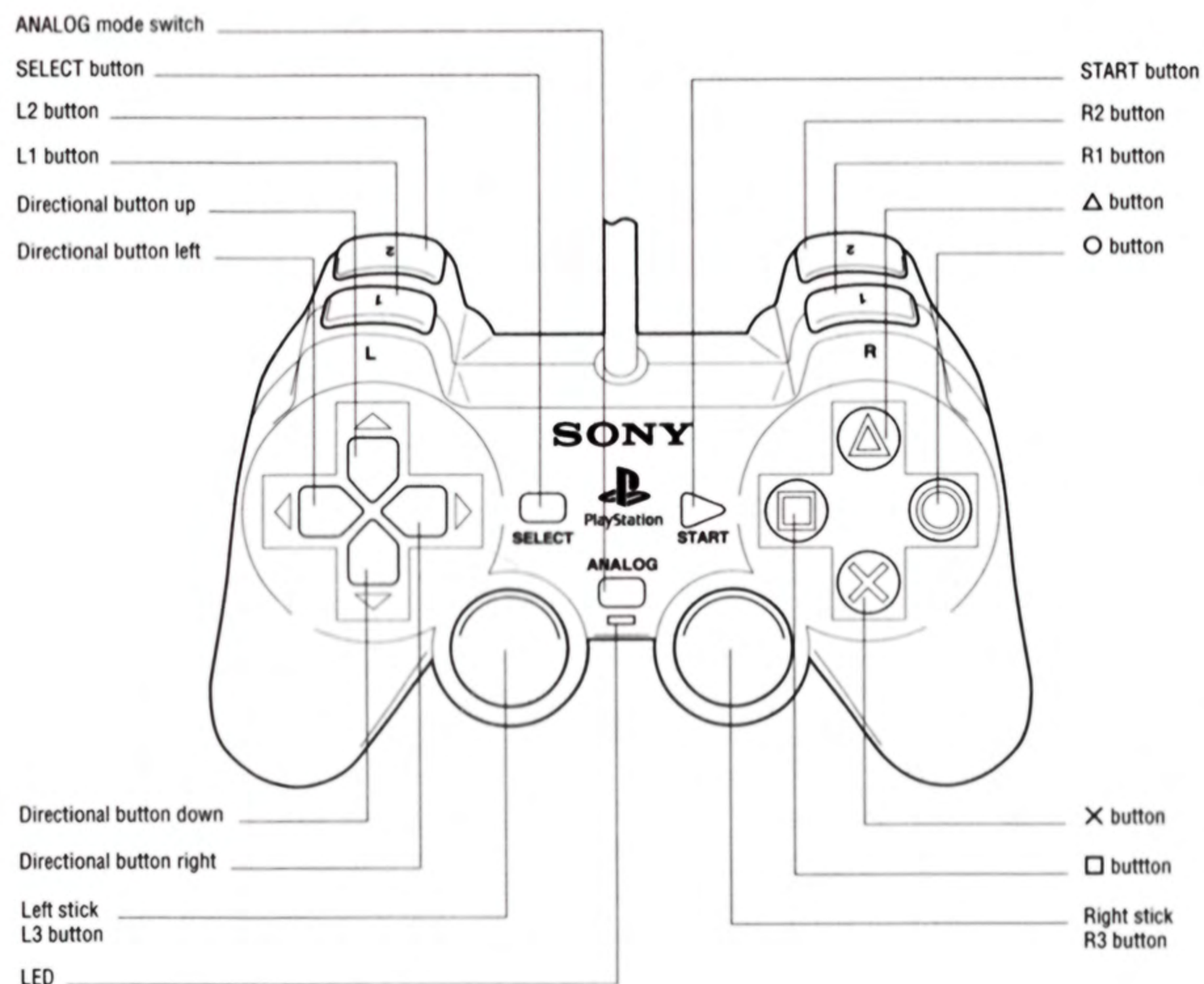
CONTENTS

| | |
|-------------------------------------|----|
| CONTROLS | 1 |
| IN THE MENUS | 2 |
| DURING GAME | 2 |
| MAIN MENU | 3 |
| GAME SCREEN | 4 |
| PAUSE SCREEN | 5 |
| THE TRICK LIST | 5 |
| RESULTS SCREEN | 5 |
| THE END LEVEL SUMMARY SCREENS | 5 |
| TRICK LIST | 6 |
| MEMORY CARDS | 6 |
| SAVING & LOADING GAME DATA | 6 |
| LEVEL NAMES/CHARACTERS | 6 |
| SKY FORTRESS | 7 |
| SHABA CREDITS | 8 |
| CRAVE ENTERTAINMENT CREDITS | 9 |
| MUSIC CREDITS | 11 |
| WARRANTY | 16 |

STARTING-UP

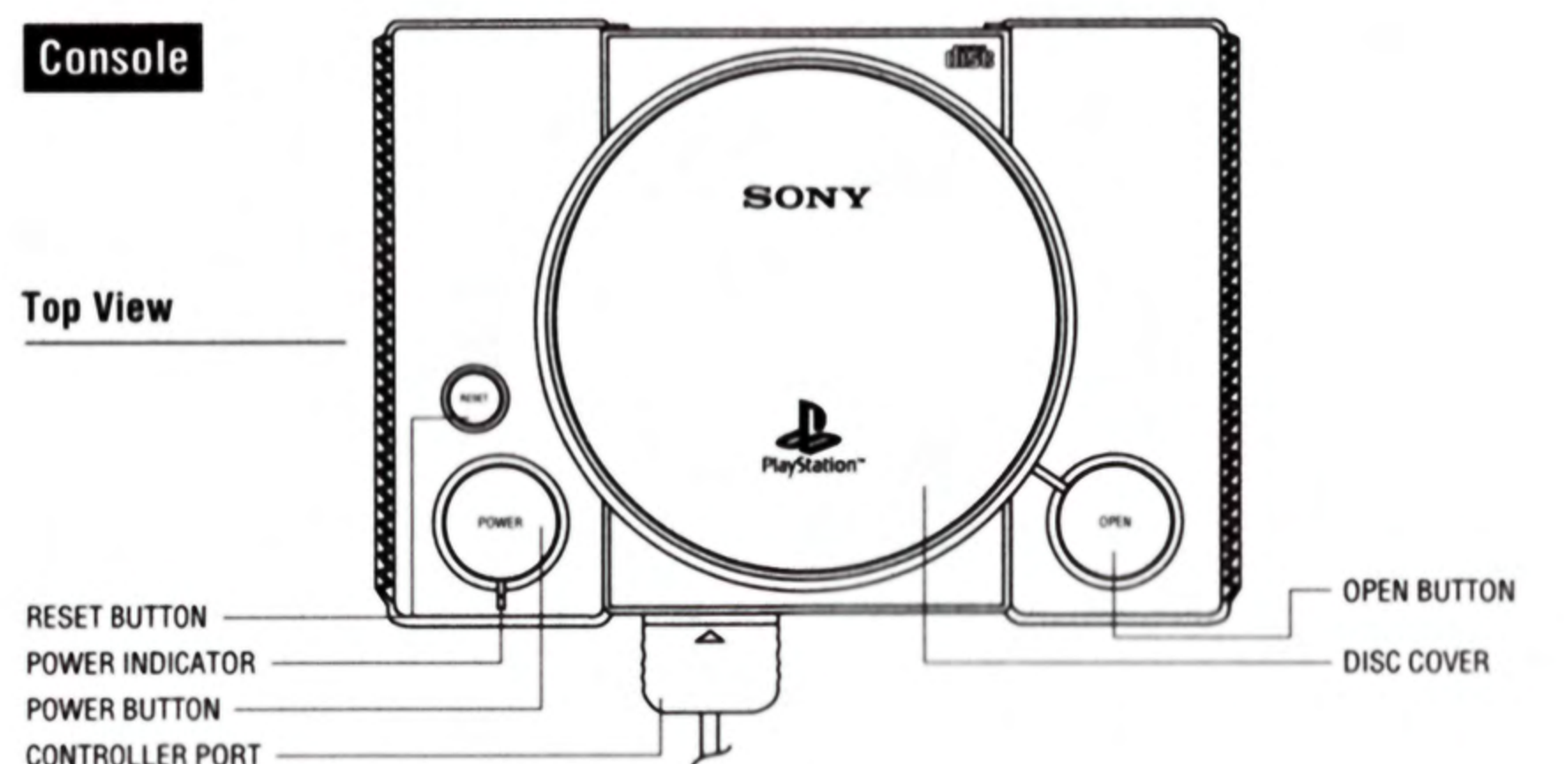
- Set up your PlayStation game console according to the instructions in its Instruction Manual.
- Make sure the power is off before inserting or removing a compact disc.
- Insert the RAZOR Freestyle Scooter disc and close the Disc Cover.
- Insert game controllers and turn on the PlayStation game console.
- Follow on-screen instructions to start a game.

CONTROLS

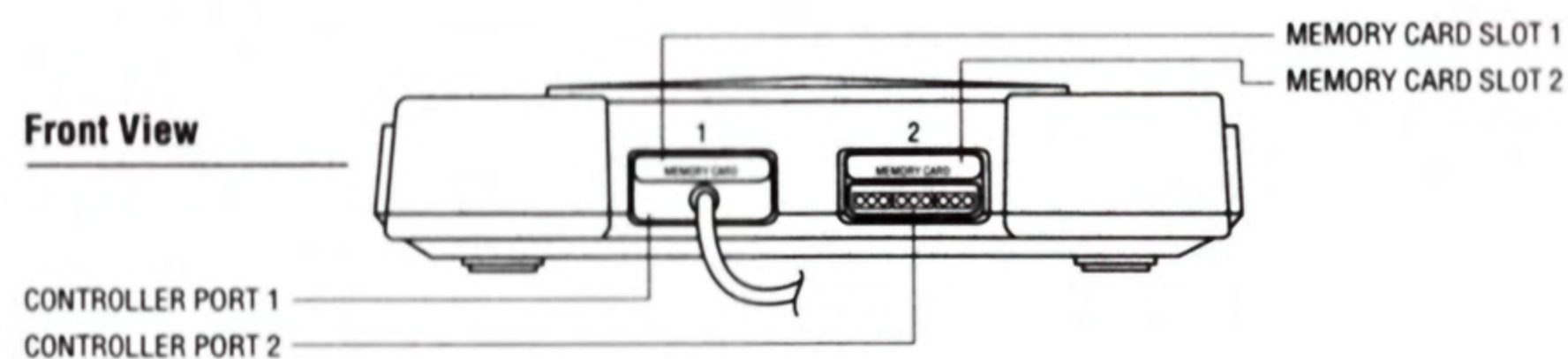


Console

Top View



Front View



IN THE MENUS

| | |
|--|---------------------|
| Highlight menu option | Directional buttons |
| Confirm/open selection | X button |
| Back to previous screen/cancel selection | ▲ button |

DURING GAME

| | |
|-------------------------------------|---|
| Acceleration | Press and hold X button |
| Pause game | START button |
| Brake (while on ground) | ● button |
| Jump | Press and release X button |
| Holdable Tricks | ● button + Directional buttons (while in the air) |
| Non-Holdable Tricks | ■ button + Directional buttons (while in the air) |
| Rail Tricks/Rail Stalls/Hand Plants | Press and <u>hold</u> ▲ button + Directional buttons (LEFT/RIGHT to balance rail grinds) |
| Hard turn (ground) | L1 or R1 button + Directional buttons |
| Spin | Directional buttons LEFT/RIGHT (while in the air) |
| Exit half pipe | Directional buttons UP (hold) before reaching the lip or the quarterpipe transition |
| Free Look | L2 or R2 button |

NOTE: See a quick reference of the tricks during the game by pressing the START button, and selecting TRICK LIST by pressing the **X** button.

MAIN MENU

ONE PLAYER

CIRCUIT

Unlock more courses by completing objectives. You have to unlock levels before you can play them in practice or versus mode. These objectives are:

LEVEL CLEAR (earn 10,000, 15,000, and 20,000 pts. for levels 1, 2, and 3 respectively).

Grind XXX footage (grind 600, 700, and 800 feet for levels 1, 2, and 3 respectively).

Extreme Score (earn 30,000, 45,000, and 60,000 for levels 1, 2, and 3 respectively).

Pull a XXX point Combo (pull a 6,000, 7,000, and 8,000 pt. combo for levels 1, 2, and 3 respectively).

Earn 100 bonus seconds.

Get XXX wheels (get 30, 30, and 40 wheels for levels 1, 2, and 3 respectively).

Completing an objective for all three levels unlocks a secret Sky Fortress level.

PRACTICE

Play any unlocked course with no time limit. Points are not totalled, only the last trick or combo is displayed.

MULTI-PLAYER

VERSUS

One-on-One. Take turns playing any available track from Circuit Mode.

SETTINGS

OPTIONS

Press the Directional buttons UP/DOWN to select a setting.

Press the **X** button, or press LEFT/RIGHT to change or open a setting.

Press the **▲** button to exit the menu without activating changes.

Press Start button to exit and activate changes.

SOUND & MUSIC VOLUME

Press the Directional buttons LEFT/RIGHT to change the sound or music volume.

VIBRATION

Press the **X** button to toggle the DUALSHOCK™ analog controller vibration setting ON/OFF.

RECORDS

Displays the top five scores for the regular levels in circuit mode.

THE GAME SCREEN

BALANCE METER

Keep the mark in the center of the balance meter. Also tracks number of feet ground.

TIME BAR

Fill it up and receive 10 bonus seconds.

WHEEL COUNT

How many wheels the player has collected.



TIMER

Displays the amount of time remaining.

TOTAL POINTS

Total score for the level.

TRICK POINTS

Displays number of points received for the tricks. Tricks are multiplied by performing extra spins and combo-ing tricks together.

TRICK PERFORMED

Displays the name of the last trick performed.

FREE LOOK

When the L2 or R2 button is pressed, the word "Freelook" appears on screen and player is able to look around while time is paused.

THE PAUSE SCREEN

Continue: return to the action.

Trick list: view the current player's tricks.

View goals: list objectives and their current status in the level.

Restart Level: restarts the level.

End run: completes the run and goes to Results screen.

Quit Game: returns player to the main screen.

THE TRICK LIST

The Trick List shows all the moves a rider is able to perform during gameplay. To see the Trick List during gameplay:

1. Press the Start button, highlight TRICK LIST and press the **X** button to open the list.
2. Press the Directional buttons or Left Analog Stick LEFT/RIGHT to select a trick category or UP/DOWN to scroll through the tricks.

RESULTS SCREEN

Total points: Total points earned in current run.

Wheels Found: Total wheels found in current run.

Grind distance: Total grind distance in run.

Time bonus: Total bonus seconds earned by filling time bar.

Best Combo: Highest point combo performed.

Crash count: Number of bails during run.

Tricks landed: Total number of individual tricks successfully landed.

Combos landed: Total number of combos successfully landed.

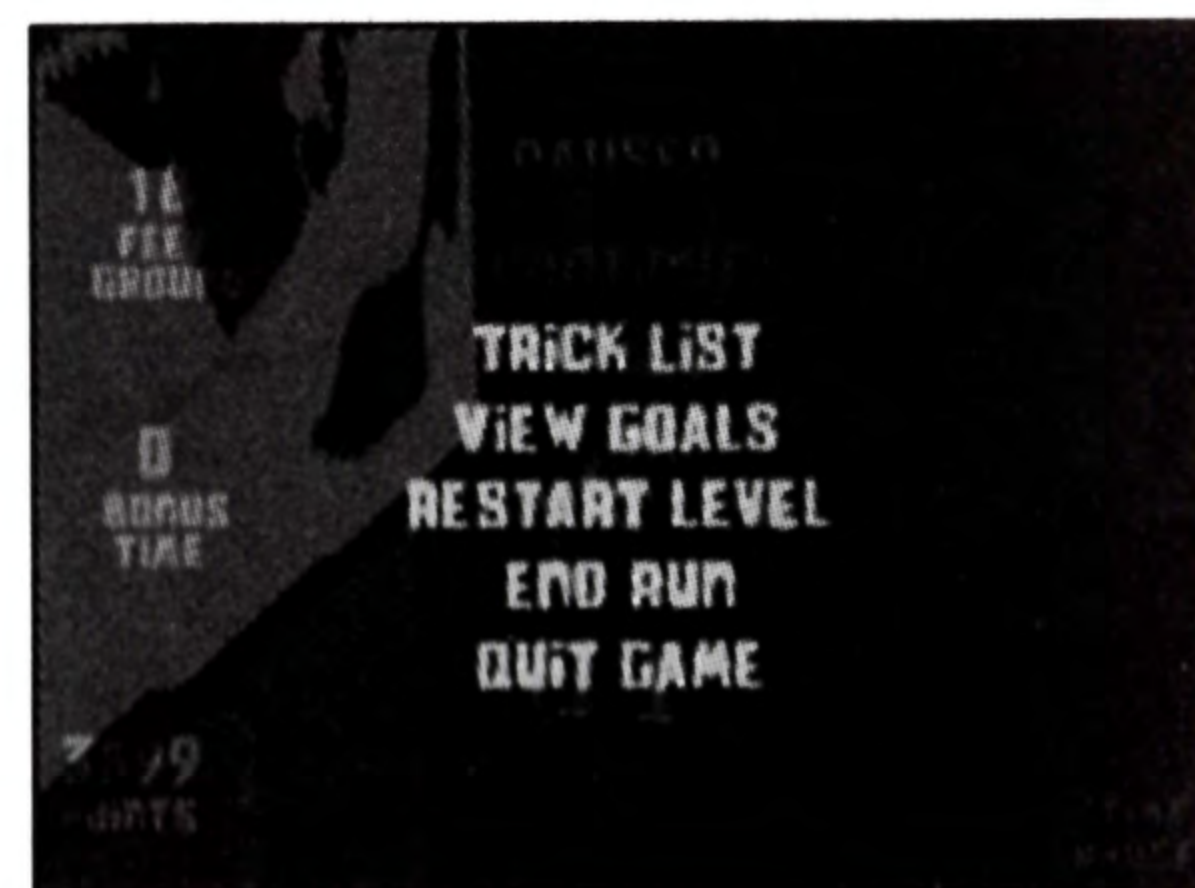
THE END LEVEL SUMMARY SCREENS

After each event the Results screen appears to give you a rundown on your progress. The Results screen displays:

- List of objectives and whether or not they have been completed.

And the menu options of:

- Select level
- View replay
- Retry
- Quit game



TRICK LIST

Each character has his own unique combination of tricks! View them inside the game.

MEMORY CARDS

To save game setting and progress, insert a MEMORY CARD into MEMORY CARD slot 1 of your PlayStation game console before starting play.

SAVING AND LOADING GAME DATA

Saving Game Data

Can be saved manually in Options or Auto Save as enabled in Options menu. The Game Auto Saves when you Quit the game/Return to the level select screen.

Loading Game Data

Automatically loads on boot up or can be loaded in Options menu.

LEVEL NAMES

Scooter Park
Schoolz Out
Clock Tower

CHARACTER NAMES

Chad
Ami

Daryl
Hector
Brittany

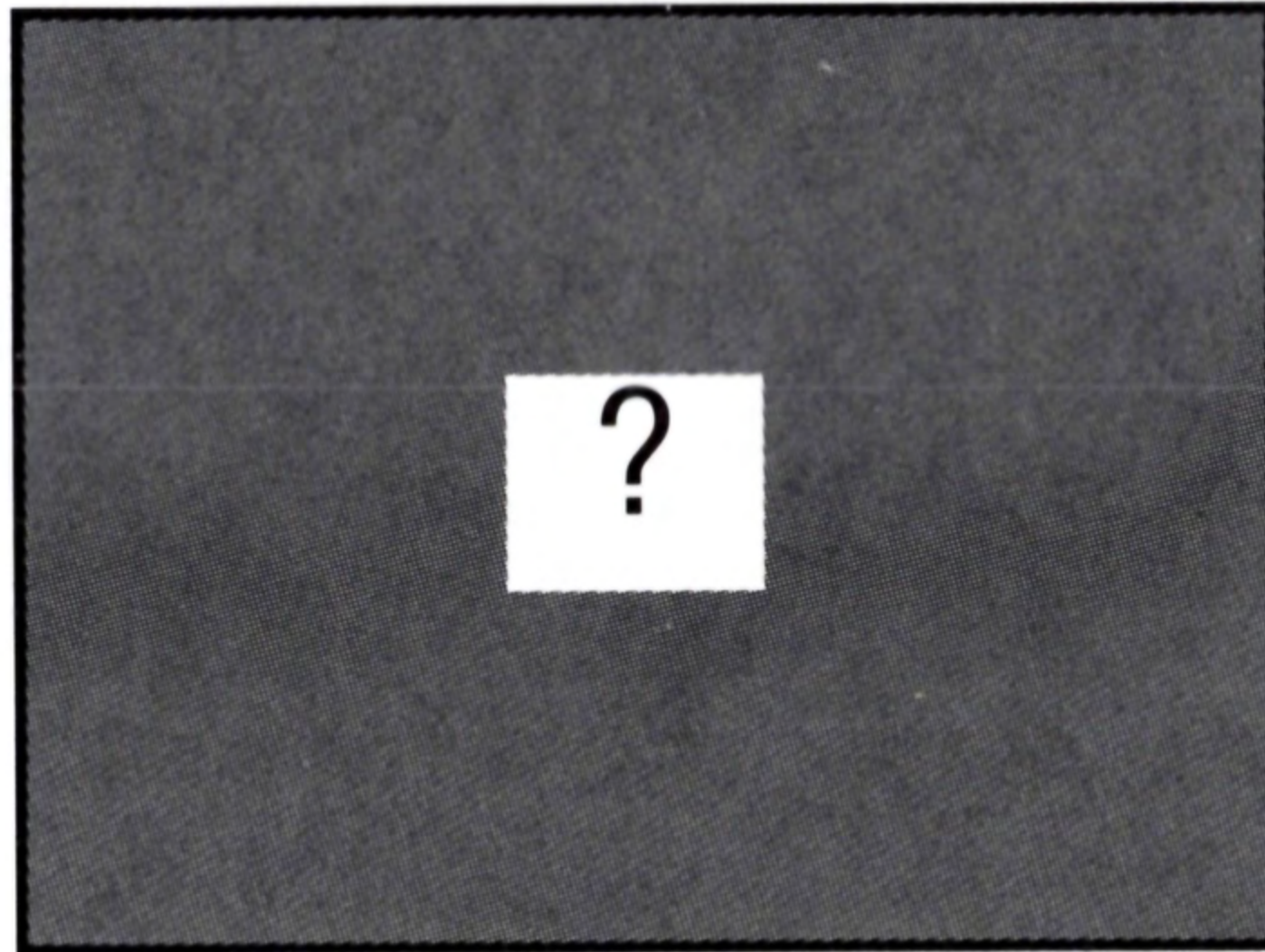
Missing members of
your razor crew.

Can you find more members of your razor crew?

More levels exist but you will need to unlock them by completing objectives listed in the 3 main levels.

SKY FORTRESS

Norton the badly programmed robot has captured the Razor Crew. Make your way to each of his 6 sky fortresses, collect all the wheels, and free your crew.



Shaba Games Is:

Richard D'Aloisio
Michael Hough
Zak Krefting
Patrick Kenney
Elise Mundell
Tim O'Neil
Vincent Riley
Chris Scholz
Garry and Jeanne Scholz
Leif Simonson
Tom Teuscher
Steve Timson
Stephen C. Trusty
Scott Werner

Sound Design and Effects:

Lorien Ferris

Voice Talent:

Jackie Baumann
Spencer Schultz

Additional Art and Character Design:

Arnold Ayala
Laura Grieve

Shaba Thanks:

Alan Haus, Esq.
Steven Stiller, Esq.
Stuart Weinstein, Cpa.
Rina Accountancy Corp.
Anne Hiaring, Esq.

CRAVE ENTERTAINMENT

| | |
|---------------------------|---|
| Executive Producer | Mike Arkin |
| Producer | Chip Bumgardner |
| Associate Producer | Mike Givens |
| Music Supervision | Louis Gilman |
| QA Manager | John Bloodworth |
| Lead Tester | Jeff Nachbaur |
| Assistant Leads | Jamie Saxon T. Dean Shimonishi |
| Testers | Judy Britton Steve Danhieux David Jew Ron Gabriel Solomon Kupu Mike Kurilko David Lopez Richard Robledo Ramero Ramirez Ramon Ramirez Paul Romero Jason Sanders Medvin Sobio Tony Summers Donald Wheeler Brian Wilson |

| | |
|---------------------------------------|---|
| Product Manager | Mark Gersh |
| Public Relations | Alex Skillman |
| Sr. Marketing Service Manager | Sheri Furumi |
| Creative Services Manager | Ryan Villiers-Furze |
| Marketing Services Coordinator | Yumi Saiki |
| Webmaster | John Nord |
| Special Thanks | Nima Taghavi Mark Burke Holly Newman Paul Sackman Martin Spiess Rebekah Shoshanah Luke Thomas Tito Ortiz Misty Stauffer |

Very Special thanks to Carlton Calvin at Razor USA.

MUSIC CREDITS

EX NUMBER FIVE

Ex Number Five-Luke Bodenstein, Alf Bartone, Timothy Cuccolo, John Stanley and John Kohler

"Just Sit Back and Relax"

Performed by: Ex Number Five

Written by: Luke Bodenstein, Alf Bartone,
Timothy Cuccolo, John Stanley and John Kohler.

Copyright 1998. Used under license.

"Not Go"

Performed by: Ex Number Five

Written by: Luke Bodenstein, Alf Bartone,
Timothy Cuccolo, John Stanley and John Kohler.

Copyright 2000. Used under license.

www.exnumberfive.com
www.mp3.com/exnumberfive



Never Too Late-Gary Late, Nick2Late, Rob Calabrese, Steve Rausche

"A Story About Us"
Performed by: Never Too Late
Written by: Gary Huber
Copyright 2000. Used under license.

"I'm Not Giving Up On This One"
Performed by: Never Too Late
Written by: Gary Huber
Copyright 2000. Used under license.

www.get.to/n2l
email: xn2lx@hotmail.com

SICK SHIFT

Sick Shift-Jeff Feuerhaken, Daniel Simon, Gary Braun, Richard Rhiger

"Despicable"

Performed by: Sick Shift

Written by: Jeff Feuerhaken, Daniel Simon,
Gary Braun, Richard Rhiger

Produced by: Angus Cooke

Copyright 1998. Used under license.

www.sickshift.com

www.mp3.com/sickshift

email: info@sickshift.com



Sloppy Meat Eaters-Josh Chambers, Kevin Highfield, John Elwell

"Outta Control"

Performed by: Sloppy Meat Eaters
Orange Peel Records, Inc. (www.orangepeal.com)
Written and Composed by: Josh Chambers
Copyright 1999.
Published by: Floor Puppet Publishing (ASCAP)
Used under license.

"Brand New Kind Of"

Performed by: Sloppy Meat Eaters
Orange Peel Records, Inc. (www.orangepeal.com)
Written and Composed by: Josh Chambers
Copyright 2000.
Published by: Floor Puppet Publishing (ASCAP)
Used under license.

www.sloppymeateaters.com
www.mp3.com/sloppymeateaters

THREEFOOT

ThreeFoot-Eric Lukasik, William Castro, Dan Shore, Cody Lainge

"Betray"

Performed by: ThreeFoot
Written and Composed by: Eric Lukasik,
William Castro, Dan Shore, Cody Lainge.
Copyright 2000. Used under license.

www.mp3.com/threefoot

WARRANTY AND SERVICE INFORMATION

CRAVE ENTERTAINMENT, Inc. warrants to the original purchaser of this CRAVE ENTERTAINMENT, Inc. Software product that the medium on which this computer program is recorded is free from defects in material and workmanship for a period of ninety (90) days from the date of purchase. The CRAVE ENTERTAINMENT, Inc. software program is sold "AS IS" and without any expressed or implied losses or damages of any kind resulting from use of this program.

If the CRAVE ENTERTAINMENT, Inc. software product fails to comply with this limited warranty, CRAVE ENTERTAINMENT, Inc. agrees to either repair or replace, at its option, free of charge, the noncomplying Crave Entertainment, Inc. software product provided it is return by the original purchaser, postage paid, with proof of purchase to CRAVE ENTERTAINMENT, Inc.'s Factory Service Center.

When returning the program for warranty replacement please send the original product disc(s) only in protective packaging and include: (1) a photocopy of your dated sales receipt; (2) your name and return address typed or clearly printed; (3) a brief note describing the defect, the problem(s) you are encountering and the system on which you are running the program; (4) if you are returning the program after the 90-day warranty period, but within one year after the date of purchase, please include check or money order for \$15 U.S. currency per replacement. Note: Certified mail recommended.

In the U.S. send to:

Warranty Replacements
Crave Entertainment, Inc.
19645 Rancho Way
Rancho Dominguez, CA 90220

This warranty shall not be applicable and shall be void if the defect in the Crave Entertainment, Inc. software product has arisen through abuse, unreasonable use, mistreatment, neglect or reasonable wear and tear. IN THIS WARRANTY IS OBLIGATION IN LIEU OF ALL OTHER WARRANTIES AND NO OTHER REPRESENTATIONS OR CLAIMS OF ANY NATURE SHALL BE BINDING ON OR OBLIGATE CRAVE ENTERTAINMENT, INC. ANY IMPLIED WARRANTIES APPLICABLE TO THIS SOFTWARE PRODUCT, INCLUDING WARRANTIES OF MERCHANTABILITY AND FITNESS FOR A PARTICIPATING PURPOSE, ARE LIMITED TO THE NINETY (90) DAY PERIOD DESCRIBED ABOVE. IN NO EVENT WILL CRAVE ENTERTAINMENT, INC. BE LIABLE FOR ANY DIRECT, SPECIAL, INCIDENTAL OR CONSEQUENTIAL DAMAGES RESULTING FROM POSSESSION, USE OR MALFUNCTION OF THE CRAVE ENTERTAINMENT, INC. SOFTWARE PRODUCT.

Some states do not allow limitations as to how long an implied warranty lasts and/or exclusions of liability may not apply to you. This limited warranty gives you specific legal rights and you may also have other rights, which vary, from state to state.

CUSTOMER SUPPORT

You may need only simple instructions to correct a problem with your product. Call the Customer Service Line at 970-392-7022, 24 hours a day, 7 days a week.

If you are looking for Hints & Tips for any Crave Entertainment product, please call:

US – 900-903-4468 \$0.95 U.S. dollar per minute
Canada – 900-677-4468 \$1.50 Canadian dollar per minute

Must be 18 years or have parent's permission. Touch tone phone required.

ESRB RATING

This product has been rated by the Entertainment Software Rating Board. For information about the ESRB rating, or to comment about the appropriateness of the rating, please contact the ESRB at 1-800-771-3772.

Crave Entertainment, 19645 Rancho Way, Rancho Dominguez, CA 90220

© 2000 Crave Entertainment, Inc. All rights reserved. Underlying technology © 2000 Shaba Games LLC and used under license. The Razor name and logos, and the appearance, configuration and trade dress of the Razor scooter, are trademarks and other forms of intellectual property of Razor USA LLC in the U.S. and other countries, used herein by permission, and may not be used or reproduced, in whole or in part, without the express written consent of Razor USA LLC. Crave Entertainment and the Crave Entertainment Logo are either trademarks or registered trademarks of Crave Entertainment, Inc. in the U.S. and other countries. All other trademarks and copyrights are the property of their respective holders.



Licensed by Sony Computer Entertainment America for use with the PlayStation game console. PlayStation and the PlayStation logos are registered trademarks of Sony Computer Entertainment Inc. The ratings icon is a trademark of the Interactive Digital Software Association. Manufactured and printed in the U.S.A. THIS SOFTWARE IS COMPATIBLE WITH PLAYSTATION GAME CONSOLES WITH THE NTSC U/C DESIGNATION. U.S. AND FOREIGN PATENTS PENDING.

